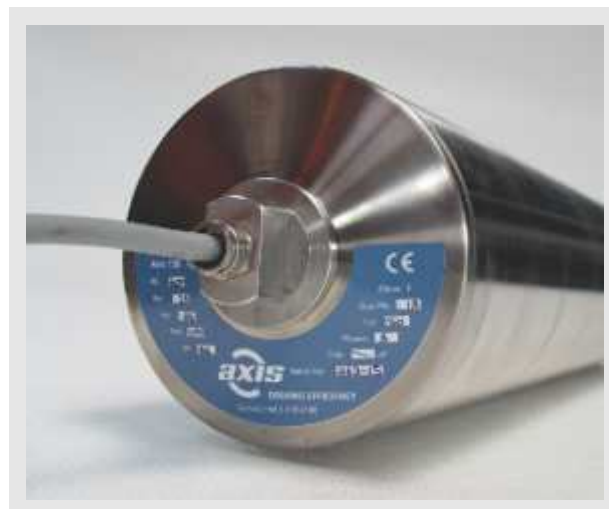


# Axis AX135 Motorised Drum

## General Features

- Diameter Ø135mm
- Standard length from 300mm
- Asynchronous three-phase or single-phase motors
- 0.12kw to 0.55kw input power
- Insulation class F
- Crowned drum surface
- Aluminium or stainless steel construction
- Permanently lubricated with synthetic oil



## Axis AX135 Dimensions

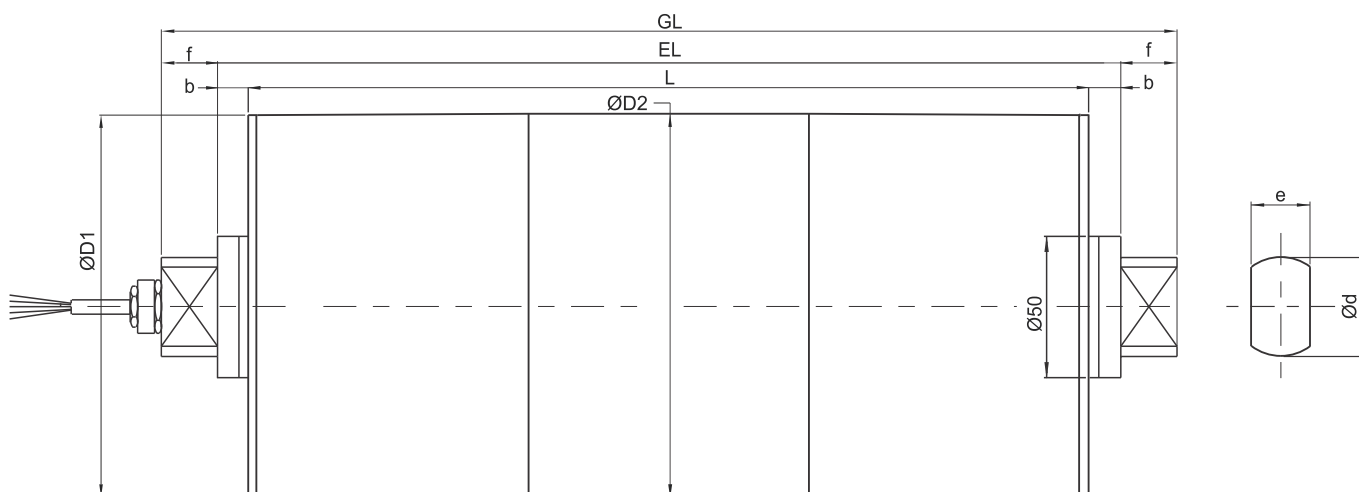


Figure 4.1

dimensions in mm

			DRUM MOTOR				STANDARD		
Size	Material	Type	ØD1	ØD2	Ø d	e	f	b	EL
135	Aluminium	AX135	132.5	133.5	35	21	20	15	L + 30
	Stainless steel		131.5	132.5					
GUIDE DRUM									
135	Aluminium	UT135	132.5	133.5	35	21	20	15	L + 30
	Stainless steel		131.5	132.5					

\* With 1.2m cable



Indicative Applications

All product details are subject to change without notice. © July 2016 Southquip Industrial

# Axis AX135 Motorised Drum

## Axis AX135 Performance Data

TYPE	POWER	BELT SPEED	ROTATION SPEED	BELT PULL	TORQUE	POWER INPUT (50Hz)	DRUM LENGTH	WEIGHT
		v	n2	F	T2		L min.	L=600mm
	[kW]	[m/s]	[1/min]	[N]	[Nm]		[mm]	[kg]
AX135	0,12 4-pole	0,10	14	1200	81,0	3x230/400V 0,95/0,70 1x230V 0,92	300	11,5
		0,14	19	857	58,0			
		0,18	25	657	45,0			
AX135	0,18 4-pole	0,18	25	1000	67,5	3x230/400V 1,20/0,94 1x230V 2,30	300	11,7
		0,24	33	750	50,5			
		0,31	43	581	39,0			
AX135	0,25 4-pole	0,18	25	1389	94,0	3x230/400V 1,50/1,17 1x230V 1,70	300	12,1
		0,24	33	1042	70,0			
		0,31	43	806	54,5			
		0,36	50	694	47,0			
		0,41	57	610	41,0			
AX135	0,37 4-pole	0,24	33	1542	104	3x230/400V 1,90/1,24 1x230V 2,30	350	12,3
		0,31	43	1134	80,5			
		0,36	50	902	61,0			
		0,41	57	694	47,0			
		0,50	70	617	42,0			
		0,80	113	463	31,0			
		0,93	131	398	27,0			
		1,07	151	345	23,5			
AX135	0,55 4-pole	0,31	43	1774	120	3x230/400V 2,80/1,80	350	12,6
		0,41	57	1341	90,5			
		0,60	70	917	62,0			
		0,80	113	688	46,5			
		0,93	131	591	40,0			
		1,07	151	514	34,5			
		1,25	176	440	29,5			

- Enquire for alternative performance data and speeds
- Indication of weight incl oil ready for operating, varies depending on construction.
- Additional weight: approx. 0,6 kg for 100mm add. length

## Axis AX Series Output Cable Options

### 1. Axial/Straight

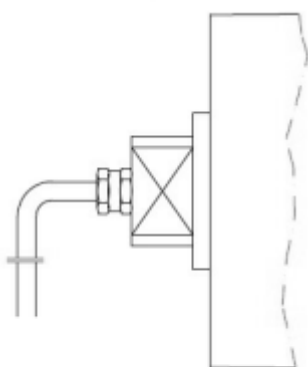


Figure 5.1

### 2. 90 Degree Elbow

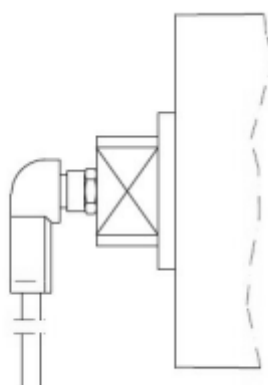


Figure 5.2

### 3. Radial

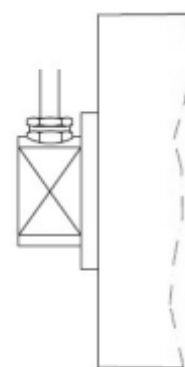


Figure 5.3